

FEHLMANN

report



INAUGURATION OF
NEW BUILDING



Expansion and new
construction in Seon

New PICOMAX 550 / 550 PRO



Close to our customers

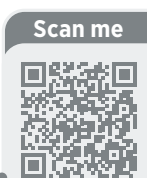
Whether at trade fairs, demonstration days, or partner events, direct and personal contact with our customers is our top priority. Face-to-face interaction provides valuable input for development, production, and service – and brings innovation to life.

Over the last two years, we have presented FEHLMANN machines at over 30 events in Europe and Asia – from Germany, Switzerland, and Italy to Poland, Finland, China, and Turkey. Our entire product range has been on display – from manual precision milling/drilling machines to 5-axis machining centers with various automation solutions.

A particular highlight was our in-house exhibition in Seon on October 30 and 31, 2025, which attracted numerous visitors. Practical demonstrations and specialist presentations gave our guests the opportunity to experience state-of-the-art manufacturing technology, automation solutions, and innovative developments directly on site. The personal exchanges in a relaxed atmosphere made the event a complete success and underscored how important customer proximity and dialogue are to us.

Further highlights included the world premiere of the PICOMAX 550 / 550 PRO at AMB 2024 in Stuttgart, the Swiss premiere at Innoteq in Bern, and participation in CIMA in Beijing and EMO Hanover 2025, where six machines could be seen in action on over 200 m² of exhibition space. Our premiere at the “Night of the Aargau Economy” was also a special experience.

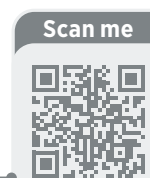
Find out where you can meet up with us – we look forward to seeing you!



On Thursday evening, September 11, 2025, we opened our doors and offered interested visitors exciting insights into Swiss mechanical engineering and our world of work and training.

Our motto, “Experience innovation, build relationships, shape the future,” will continue to guide us in the new year. In January 2026, we will participate in the 16th SWISSMEM Machining Seminar, followed by the SIAMS industrial trade fair in Moutier, CCMT in Shanghai, and other exciting events in the spring.

Impressions of
“Night of the Aargau Economy 2025” on
wirtschaftsnacht-aargau.ch



We are well-positioned for the future



Dear readers

For decades, the Swiss economy has been synonymous with innovation, quality, and reliability—values that also characterize Fehlmann AG. I am, therefore, all the more delighted to have taken over the responsibilities of our long-standing CFO and Head of Human Resources, Rolf Blauenstein, in July 2025. After more than 20 years of dedicated service, he started his well-deserved retirement at the end of June.

I am pleased to inform you about some personnel changes that will shape our future:

With the handover of sales management in Switzerland to Adrian Tobler, a long-standing employee and experienced salesman, we are setting the course for the coming years. His predecessor, Jürg Solenthaler, has spent almost his entire professional life at Fehlmann AG and will be moving on to the next stage of his life at the end of the year. We have also strengthened our customer service team with Claudio Bruno as the new manager, as well as several additional, well-trained service technicians. This means that we will be even better positioned in the future to provide you, our customers, with individual and competent support. Jonas Fehlmann joining our company is a special sign of continuity. After completing his apprenticeship as a polymechanic and his bachelor's degree in mechanical engineering, he has been working at FEHLMANN as a technical sales representative since May 2025. He is currently completing an MBA degree. Together with his brother Dominik Fehlmann, he is the fourth generation to be committed to the future of the family business.

Another milestone was our 2025 in-house exhibition, where we were able to present our new “Assembly Hall & Engineering” building to a wide audience for the first time. The new premises offer optimal conditions for setting up machining centers with automation and peripheral solutions in order to form a complete system for testing and preparation for shipment.

We are proud to present the latest additions to our product portfolio: the PICOMAX 550 and PICOMAX 550 PRO 5-axis machining centers. These powerful CNC machines are already proving very popular on the market. Further technical highlights can be found on pages 4–5.

These are challenging times, but hasn't this always been the case? Thanks to innovative products, dedicated employees, and strong partners, Fehlmann AG is well-equipped for the future.

I hope you enjoy reading this publication and send you my warmest regards.

Oliver Bärtschi, Head HR, Finance & Administration

Table of contents

TECHNOLOGY AND DEVELOPMENT

New PICOMAX 550 / 550 PRO 4

INSIDE FEHLMANN

New building for system integration 6

TECHNOLOGY AND DEVELOPMENT

Testing capacity for motor spindles 8

FEHLMANN cycles 9

Customized automation 10

Energy efficiency 11

FEHLMANN and EROWA –

New Automation Hub 12

Focus on operating comfort 13

CUSTOMERS AND WORK

Swissmechanic Training AG/SA –

Training at the highest level 14

Ypsomed AG – High-end

toolmaking for medical technology 15

Armbruster GmbH –

Precision meets automation 16

INSIDE FEHLMANN

Focus on people & the future 17

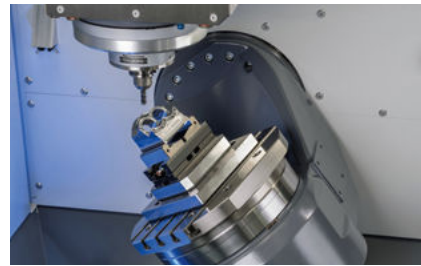
INSIDE FEHLMANN – FOCUS ON TRAINING, INNOVATION, CAREER

Focus on training, innovation and career 19

MASTHEAD

Publisher:
Fehlmann AG Maschinenfabrik
Birren 1, 5703 Seon / Switzerland
Tel. +41 62 769 11 11
mail@fehlmann.com
www.fehlmann.com
Circulation: 6000 copies
Edition: December 2025

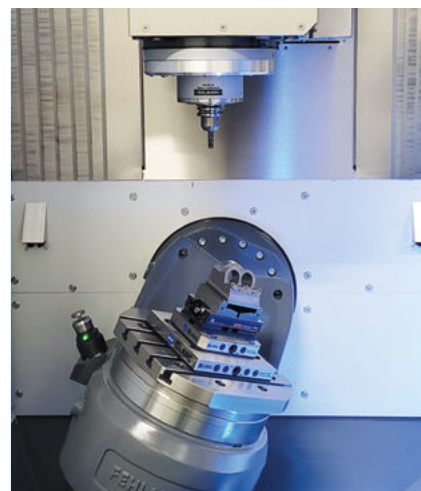
New PICOMAX 550/550 PRO



Integrated rotary swivel table with cooled torque drives for precise and efficient machining of demanding parts.



The latest generation of Heidenhain controls can handle all the demands of your workshop.



Generous Z-axis travel for maximum flexibility. More space for workpiece clamping, tall workpieces, and the use of long tools.

PICOMAX 550 – Perfect for versatile 5-axis machining

The optimal combination of simplicity, versatility, and flexibility: The PICOMAX 550 meets all the basic requirements of 5-axis machining and impresses with its exceptional user-friendliness. Ideal for users looking for a powerful but uncomplicated machine – whether for training or for versatile machining projects. Thanks to advanced torque drives, the PICOMAX 550 is designed for true 5-axis simultaneous milling and delivers impressive performance.

PICOMAX 550 PRO – The plus for more demanding applications and increased production requirements

The PRO version of the PICOMAX 550 is equipped with a tool changer with chain magazine that can hold up to 60 tools. There are also three different spindle types to choose from. Optionally, the swivel table can be equipped with an automatic and monitored zero-point chuck. This enables the integration of automation solutions to further increase the efficiency and productivity of the machine.



Premiere of the PICOMAX 550/550 PRO at AMB in Germany.

Compact, flexible, precise – the new PICOMAX 550/550 PRO meets today's requirements for 5-axis machining

The FEHLMANN product range offers a wide variety of machines, from simple conventional drilling and milling machines to high-end automated 5-axis machining centers. Flexible and scalable machines that can meet a variety of production requirements are in particularly high demand nowadays. The new PICOMAX 550/550 PRO are

precision machines with automation options for small and medium-sized batches and are ideal for meeting these requirements. Compact and space-saving, they offer high performance and great flexibility. FEHLMANN focuses on continuous development and integrates the latest technologies into its machines. FEHLMANN's innovations enable networked and intelligent production concepts that offer maximum efficiency. Automation and digitalization simplify processes and relieve employ-

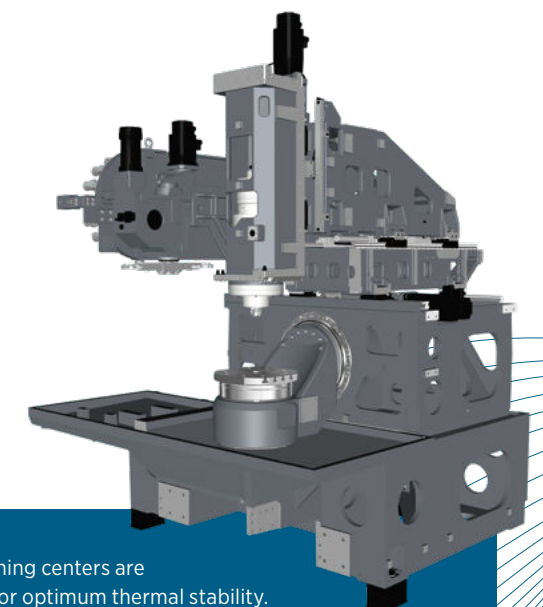
ees of repetitive tasks. Sustainability and energy efficiency are further focal points in FEHLMANN's development activities. Our customers benefit from future-oriented machines that offer long service life.



The well-thought-out design ensures optimum accessibility and ease of use. All important areas of the machine are arranged within easy reach and in a space-saving manner.



Automation for pallet or parts handling is also available for the PRO version upon request. FEHLMANN's flexible automation solutions increase productivity and can be retrofitted at any time.



The machining centers are designed for optimum thermal stability.

New building for system integration – more space for future technology



The new buildings blend in well with the overall look of the FEHLMANN factory site.

The increasing complexity and modularity of our customer-specific, turnkey automation solutions require modern infrastructure and smooth processes. With our new “building 4” on the north side of the existing company premises in Seon, we are creating the ideal conditions to meet these requirements.

Construction began in August 2024 and was successfully completed in October 2025 – an important milestone in the further development of our location in Switzerland.

The centerpiece of the new building is the assembly hall, approximately 1800 m² in size. Its crane hook height of 6.5 m enables the safe handling of heavy assemblies, workpieces, and

automation modules – ideal conditions for the assembly and commissioning of complex manufacturing systems. An integrated mobile rack system with a capacity for up to 800 pallets also ensures optimal use of space. The new hall provides sufficient space for our machining centers, which are produced in-house, to be assembled,

commissioned, tested, and prepared for shipment – together with automation and peripheral solutions in order to form complete system solutions. And all of this without interrupting the ongoing machine assembly flow.

The hall is complemented by the modern “tower” with a reception area, training rooms, 600 m² of office space, and an additional 300 m² for meeting and technical rooms. This will create up to 20 additional jobs – an increase of around 10% of the current workforce. In addition, 24 new parking spaces have been created, four of which are equipped with electrical charging stations. A representative customer area rounds off the concept.

The new building also sets a clear example in terms of sustainability: 13 geothermal probes, each 260 m deep, supply the building with heating and cooling. The photovoltaic system with an output of 320 kWp (a total of 500 kWp together with building 2) supplies electricity directly for the company’s own consumption during the working week.

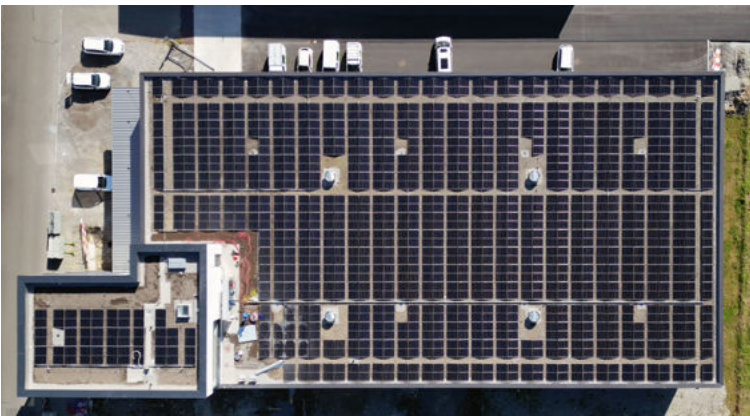
With this investment, Fehlmann AG is focusing on state-of-the-art infrastructure that not only meets increasing customer requirements, but also contributes to strengthening the location in Seon in the long term.



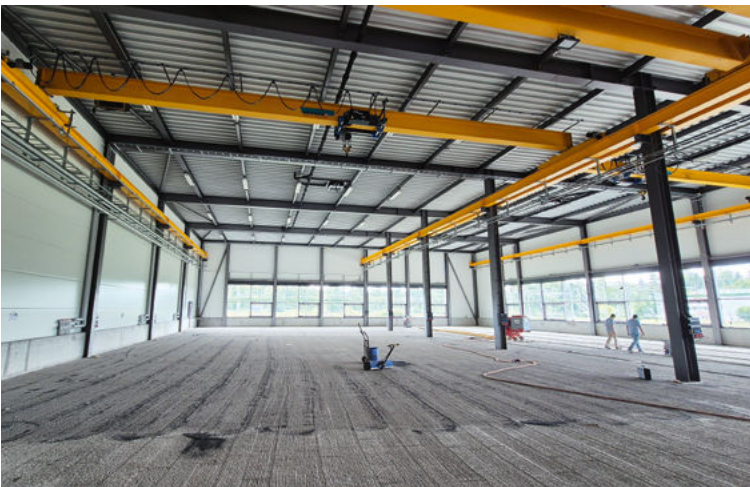
Groundbreaking ceremony for new building in September 2024.



Installation of facade and roof.



New photovoltaic system with capacity of 320 kWp on roof of new “building 4”.



Functionality and simplicity characterize the spacious and bright assembly hall.

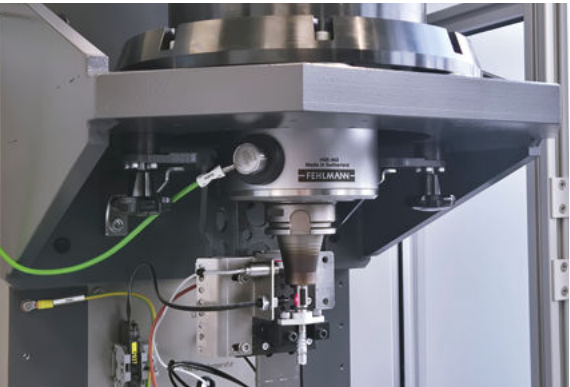


The hall has a steel structure..

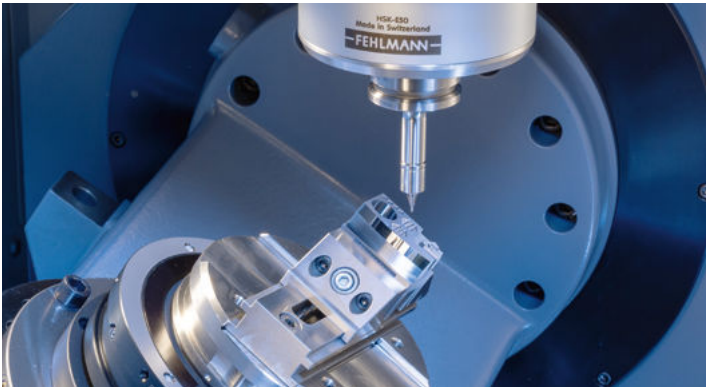
FEHLMANN expands testing capacity for motor spindles



In the new testing center, motor spindles are tested for adherence to the highest quality standards.



FEHLMANN's high-precision, durable motor spindles form the heart of the milling machines.



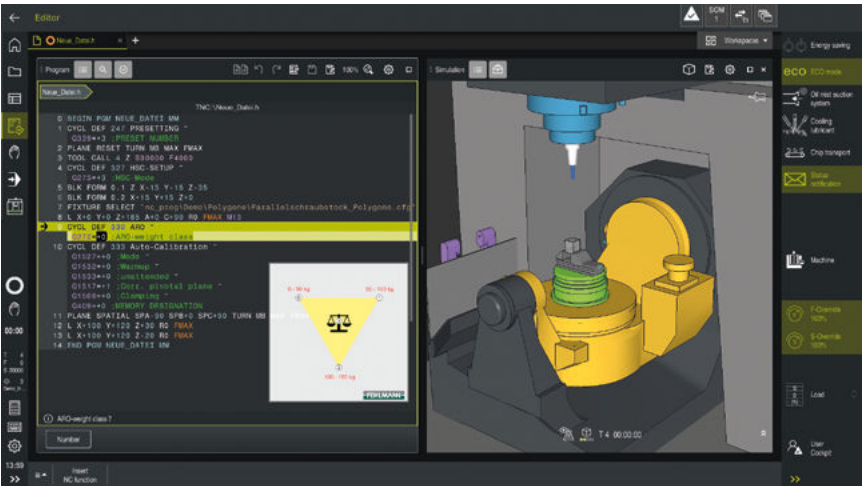
Precise position correction in Z
The spindle detects even the slightest temperature changes or thermal expansion – and corrects them automatically. This ensures that the tool always remains in the perfect position, no matter how demanding the machining operation.

The motor spindle is the heart of every machine tool – it determines precision, smooth operation, and productivity.

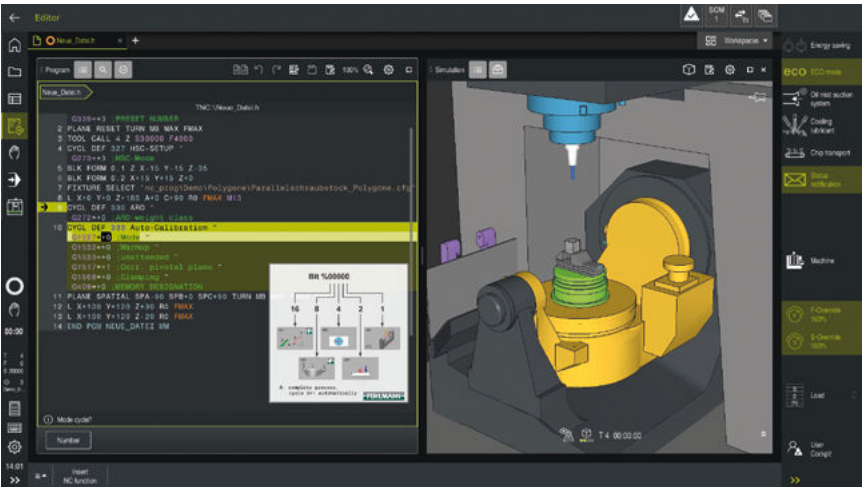
For almost 30 years, we have been developing and manufacturing our FEHLMANN high-performance motor spindles in-house, precisely tailored to the machine and application. Each spindle is individually optimized and comprehensively tested before installation – now at two additional testing stations in the modern, expanded spindle test room.

With this investment, FEHLMANN is expanding its testing capacity, strengthening quality assurance, and reaffirming its commitment to vertical integration and its Seon location. Depending on requirements and customer preferences, FEHLMANN machines are available with different motor spindle variants – with ISO/SK 30, HSK-E40, HSK-E50, or HSK-A63 tool holders, as well as in various torque and speed classes. All spindles offer high spindle acceleration for short ramp-up times. They also guarantee low-vibration and precise concentricity – for flawless surfaces, long tool life, and maximum process reliability.

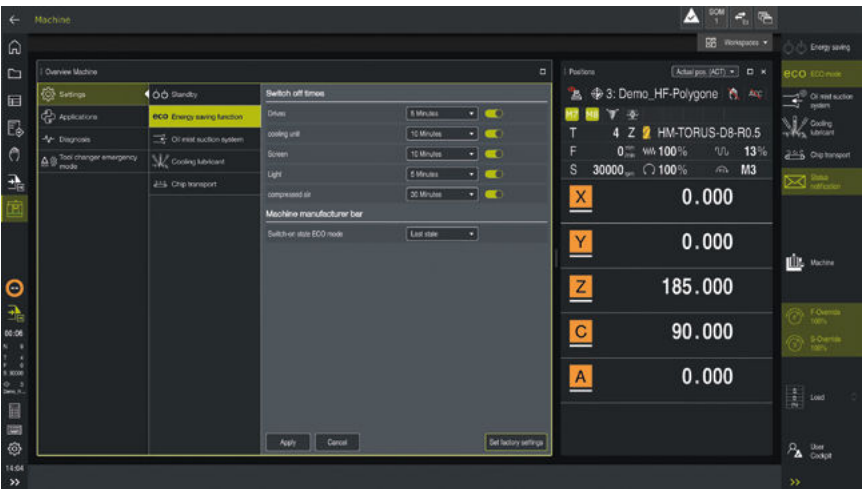
FEHLMANN cycles – get the most out of your machine



FEHLMANN Zyklus ARO™



FEHLMANN Zyklus 333 Auto-Calibration



Enhanced energy-saving function



Your FEHLMANN machine can do more than just run standard cycles. For over 40 years, we have relied on Heidenhain CNC controls and have also developed our own cycles – integrated directly into the control system – practically, efficiently and completely in-house. Spare parts and support are available directly from us in Seon – fast and reliable.

Examples from the FEHLMANN 5-axis cycle package for the VERSA series:

- ARO™ (Automatic Rotary-Axis Optimization): automatic detection of workpiece weight, optimized control of rotary/swivel axes, low vibration, high precision, perfect surfaces.
- Cycle 333 Auto-Calibration: fully automatic 5-axis calibration including probe. Simple, fast assurance of consistently high quality.
- Extended energy-saving function: automatic shutdown of drives, programmed restart for unattended spindle and axis warm-up.

And much more – let us advise you – get in touch with us.
mail@fehlmann.com

Customized automation

With our machines and MCM™, you have complete flexibility in choosing your automation solution. Thanks to open interfaces, a wide variety of systems can be seamlessly connected. For you, this means easy integration, future-proof investments, and production that can be tailored precisely to your requirements – today and in the future.

Do you already know what our MCM™ can do?

The **Milling Center Manager (MCM™)** developed by FEHLMANN is the heart of modern, autonomous manufacturing. It combines maximum technical precision with ease of use – and is constantly evolving.

The intuitive **Windows interface** allows you to flexibly plan and adjust machining sequences, zero points, tool inserts, and numerous other parameters. This gives you full control over the machine and robot at all times.

The MCM™ ensures maximum process reliability with integrated functions such as **tool breakage monitoring, NC program error detection, and automatic notifications** via text message or email. This means that production continues reliably – even during unattended night and weekend shifts. The additional features that make your production even more efficient are especially practice-oriented:

- Workpiece or chip detection for safe operation
- Multiple clamping – machine multiple parts on one pallet
- Sequential orders: for example, pre-machining on one machine and finishing on another

The result: **maximum productivity, flexibility, and safety** in every step of the manufacturing process. With MCM™, you not only free up capacity, but also make your production fit for the future.



We also presented another example of a turnkey automation solution by FEHLMANN at EMO Hanover 2025: the high-performance FEHLMANN VERSA 745 machining center, combined with the Erowa Robot Compact 150 (ERC 150). This compact automation cell enables the handling of workpieces weighing up to 150 kg with minimal space requirements and a high pallet capacity. The entire system is controlled centrally via the FEHLMANN Milling Center Manager (MCM™).



Together with our regional representative GIBAS B.V. Netherlands, we have realized a FEHLMANN PICOMAX 550 PRO as an automated production system with 6-axis automation and integrated FEHLMANN MCM™ for their showroom. The system celebrated its premiere at our booth at EMO Hanover 2025.

Energy efficiency – incorporated from the outset



At FEHLMANN, energy efficiency is not just a buzzword, but a principle. Energy consumption is considered comprehensively right from the development stage of new machines – both at peak loads and during set-up and changeover operations. A machine structure optimized for strength, precisely scraped mounting surfaces, and fully digital drive technology ensure maximum dynamics, accuracy, and productivity while keeping energy consumption low. The automatic, demand-oriented shutdown of individual units further reduces energy and operating costs. Thanks to our high level of vertical integration – including our own motor spindles – we have an overview of the entire life cycle. Modern spindle technology, intelligent cooling and lubrication solutions, and ECO mode minimize power and air consumption without compromising performance. Durability and retrofitability secure investments for decades.

We have been participating in the Energy Management Program of the Energy Agency for Industry (EnAw) since 2014. With clear target agreements, we are continuously reducing energy consumption and CO₂ emissions – measurably and transparently. We also take the ISO 14955 standards into account during development and use energy-efficient drives, pumps, and high-quality materials. Features such as energy recovery during braking, the FEHLMANN Cycle 333 for quick calibration, and advanced energy-saving options bring noticeable benefits during operation.

This is how we combine precision engineering with state-of-the-art energy standards – for sustainable, future-proof manufacturing.

Experience technology – live at FEHLMANN and EROWA in the new Automation Hub

Milling, measuring, and eroding – combined and fully automated: at EROWA's newly opened Automation Hub, visitors can experience state-of-the-art manufacturing technology up close.

Hands-on innovation

The configuration of a new machine needs to be well thought out – many details can only be properly assessed when you can see, hear, and feel them for yourself. Automation has been an integral part of FEHLMANN's machine concepts for many years.

In order to provide our customers with practical support in planning and selecting their ideal solution, we present not only individual machines but also complete, automated manufacturing solutions at our technology center in Seon. Various configurations are on display – from the automation of a single machine to two-machine systems with flexible robot integration.

New EROWA Automation Hub

FEHLMANN customers can now combine their visit to Seon with a side trip to the newly built EROWA AG Automation Hub in Bûron, only about 30 minutes away.

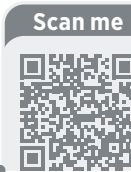
A FEHLMANN VERSA 745 can be experienced in action there – linked to a measuring machine and an eroding system. The EROWA Robot Dynamic 150L (ERD 150L) ensures automated workpiece flow via rail connections; various pallet types can be loaded flexibly into the machine.

This unique exhibit impressively illustrates how milling, measuring, and eroding seamlessly interlock in a continuous, automated process – from raw part machining to the finished precision component.

Customized automation solutions

Whether for demanding parts manufacturing or mold making, FEHLMANN automation solutions can be individually configured and optimally tailored to the respective manufacturing environment. This results in flexible, future-oriented systems that perfectly combine precision, efficiency, and productivity.

Interested? Our sales consultants would be happy to provide you with information about visiting options and appointments.



EROWA's Automation Hub in Bûron showcases fully automated production with the FEHLMANN VERSA 745, a measuring machine, an EDM machine, and the EROWA Robot Dynamic 150L.



Focus on operating comfort

Heidenhain TNC7 – now available with Override Controller OC 310

The Heidenhain TNC7 already impresses with its intuitive and convenient operation as standard. FEHLMANN machines can now also be equipped with the optional OC 310 override controller – for even more control and safety during program execution. The OC 310 combines several functions in a single control element:

- Sensitive control of feed and rapid traverse
- Program start via integrated NC start button
- Acknowledgment of conditional stops at defined stopping points
- Haptic feedback via vibration and LED scale

The OC 310 automatically sets the override value to 0% in the event of abrupt turning – for maximum safety and full control.

Override Controller OC 310
New option for Heidenhain TNC7

Height-adjustable control panel – available as an option for FEHLMANN machining centers

FEHLMANN machines combine practical design and excellent operator ergonomics – well thought-out down to the last detail. A height-adjustable control panel is now also available as an option, providing additional comfort and flexibility – even for users with special ergonomic requirements.

- Individually adjustable working height
- More comfort during long operating times
- Less fatigue for user
- Optimal ergonomics regardless of height

Height-adjustable control panel for convenient and individual operation



Customer reports – Success stories with FEHLMANN



Swissmechanic Training AG/SA – Training at the highest level



Ypsomed AG – High-end tool making for medical technology



Armbruster GmbH – Precision meets automation

Three companies – one common denominator: precision, reliability and partnership with FEHLMANN.

Read the full article on our website:

Scan me



Swissmechanic Training AG / SA Münchenbuchsee

Training at the highest level “Where champions are trained”

The PICOMAX 56 mill has also been systematically designed to meet the needs of basic vocational training. For manual machining without sacrificing the advantages of a CNC machine – switch to CNC mode at any time at the touch of a button.

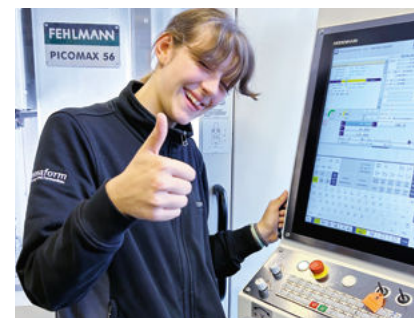
With a centralized training location in Münchenbuchsee and the investment in state-of-the-art CNC machine tools, Swissmechanic Training AG/SA is setting new standards for the future-oriented training of the MEM specialists of tomorrow.

With 18 PICOMAX 56 mill machines, Swissmechanic in Münchenbuchsee is setting new standards in the training of polymechanics. The hybrid machine combines manual milling with state-of-the-art 4-axis CNC technology and can be flexibly adapted to the level of training.

“We want to prepare tomorrow’s skilled workers for real-world production conditions – and the FEHLMANN PICOMAX 56 mill is perfect for this,” says Markus Kammermann, Managing Director.



Salahudin Mohamed Din, production mechanic apprentice EFZ, Diametal AG, Biel



Amy Joelle Roth, polymechanic apprentice EFZ, Primaform AG

Read the full report online

Scan me



Proven 1000 times over – FEHLMANN PICOMAX 56/PICOMAX 56 L

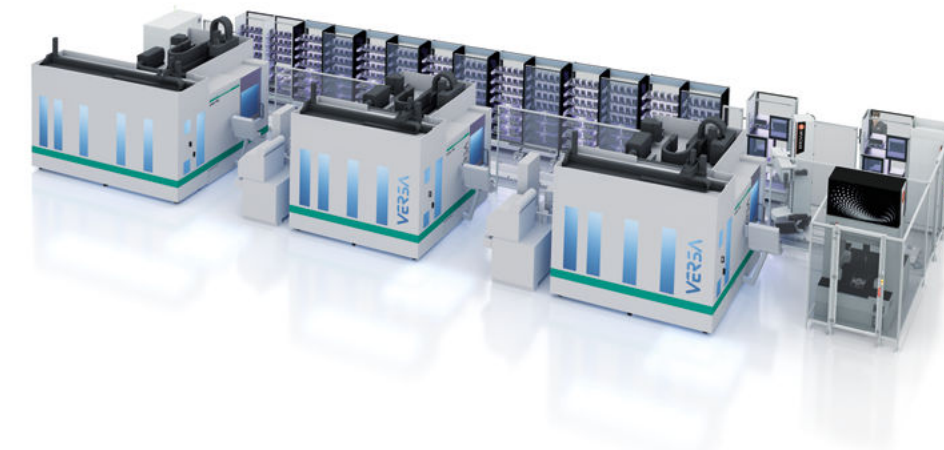
This year, the PICOMAX 56 celebrates a special milestone: the 1000th machine of this successful model is leaving our production line. Since 2011, the PICOMAX 56 – in the TOP/L TOP and later mill/L mill versions – has been impressing customers with its reliability, cost-effectiveness, and efficiency.

Whether in medical technology, the watch industry, aerospace, or in schools and training centers: the PICOMAX 56 is used worldwide and impresses with its simple operation, powerful performance, and flexible application options.

A genuine Swiss quality product – built 1000 times, proven 1000 times.

Ypsomed AG – High-end tool making for medical technology

Ypsomed AG is doubling its capacity with a new site in Solothurn. At its heart is a flexible manufacturing system consisting of a FEHLMANN VERSA 945 and two FEHLMANN VERSA 745 machines, the latter also featuring a grinding option, connected to Erowa automation. This enables the company to manufacture injection molding tools for pen injectors with maximum precision – including repeat accuracy in the range of 3 µm.



“Our machines have to run around the clock. That means we need precision, precision, and more precision. When we manufacture the same component ten times, the repeat accuracy must be within 3 µm. The VERSA centers from FEHLMANN achieve this accuracy with a high degree of process reliability – and thanks to the well-thought-out machine concept, the run-in of the components is particularly straightforward,” explains Elias Wermuth, Manager Tool Manufacturing.



Michael Maurer (r., Project Manager Tool Manufacturing) and Elias Wermuth (Manager Tool Manufacturing) inspect a mold insert for an injection molding tool.

Read the full report online

Scan me



Grinding is integrated

In addition to FEHLMANN milling cycles, VERSA machining centers also offer optional specific grinding and dressing cycles directly in the Heidenhain TNC7 control with a 24" full HD screen.

This allows you to combine hard milling and grinding in one machine – precisely, efficiently, and with a perfect surface finish.

Armbruster GmbH – Precision meets automation



Customized automation

Whether you need a compact cell or a highly flexible manufacturing system, FEHLMANN offers turnkey automation solutions that are perfectly tailored to our machining centers. Thanks to their open system architecture, our machines can be easily integrated into existing production environments and adapted to a wide variety of automation concepts. The result is customized complete solutions that are precise, efficient, and reliable.

FEHLMANN AG
Maschinenfabrik

Scan me



Perfectly coordinated: two VERSA 745 machining centers from FEHLMANN work seamlessly with Cellro Ultimate Automation – on only 61 m².

The requirements in medical technology are high precision in the micrometer range, absolute process reliability, and maximum flexibility are not optional extras, but absolute requirements. For Armbruster GmbH, a specialist in the manufacturing of medical instruments and implants made of stainless steel and titanium, this is everyday reality.

In order to continue producing at the highest level in the future, the company invested in a clever combination: two 5-axis high-performance machining centers in portal design, FEHLMANN VERSA 745, connected to the flexible Ultimate automation system from Cellro. The solution enables 24/7 production on just 61 m² – with full process reliability and flexibility.

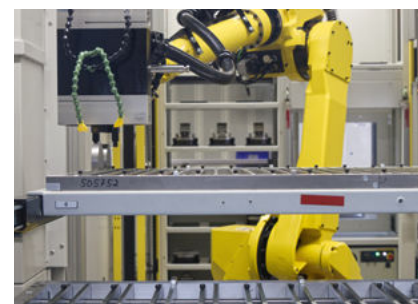
What sets Armbruster apart is its ability to respond flexibly to changing market requirements – with short throughput times, a wide variety of parts, and uncompromising quality standards. In order to live up to this philosophy even as complexity and

automation increase, the company relies on modern technology and long-standing partnerships. One of these has connected Armbruster with FEHLMANN AG for decades.

“We wanted a solution that would grow with us – and we found it,” emphasizes Tobias Armbruster, Managing Director.

Read the full
report online

Scan me



Customized solution for complex parts: the robot precisely positions round-sawn blanks for machining.



A key component: the precise machining of the cutting block for knee joints on the VERSA saves time, reduces costs, and improves the entire manufacturing process.

Focus on people & the future

Thank you, Jürg Solenthaler – Welcome to the team, Jairo Delgado



FEHLMANN Sales team Switzerland (from left) Fabio Casteletti, Martial Marmy, Jürg Solenthaler, Adrian Tobler, Jairo Delgado.



After more than 40 years of service at FEHLMANN, we bid farewell to our long-standing Sales Manager for Switzerland, Jürg Solenthaler, as he enters his well-deserved retirement. Thank you very much for your outstanding contribution! His successor as Sales Manager is Adrian Tobler. In June 2025, Jairo Delgado joined our Swiss sales team as the new Sales Consultant for the eastern part of Switzerland.

Read the interview with Jürg Solenthaler, by Nastassja Neumaier and Matthias Böhm (in German).

Scan me



HAPPY TO BE OF SERVICE:



“Our goal is to provide customers with fast, sustainable service – personally, competently and reliably.”
– Claudio Bruno.

Customer Service – competent, efficient, personal

Claudio Bruno is our new Head of Customer Service – together with his service team, he will support you with his expertise and dedication.

Machine tools are high-performance systems – and expectations for service are correspondingly high. At FEHLMANN, customer service is a central part of our quality promise. We continuously invest in:

- Our own highly trained service technicians, digital service tools, and efficient processes
- Intensive training for technology and support
- Competent hotline – fast and personal

Customer Service

Phone +41 62 769 12 80
Fax +41 62 769 11 93

service@fehlmann.com
www.fehlmann.com

Focus on training, innovation and career

FEHLMANN in-house exhibition 2025
October 30 and 31, 2025 – a complete success

For two days, everything in Seon revolved around state-of-the-art precision machining. Numerous guests took the opportunity to learn about the latest developments in machining at the FEHLMANN in-house exhibition and to exchange ideas with our experts.

The new FEHLMANN PICOMAX 550 / 550 PRO, which we presented in live demonstrations, received particular attention. Visitors were also impressed by our diverse product range – from conventional milling machines to highly automated 5-axis machining centers.

Another highlight was the inauguration of the new “Assembly Hall and Engineering” building, which offered exclusive insights into state-of-the-art infrastructure.

The event was rounded off with exciting specialist lectures and guided tours of the company. The response was overwhelmingly positive – we would like to thank all visitors for their keen interest and the many enriching discussions.

A family business with a future

Jonas Fehlmann, the eldest son of Managing Director and owner Frank Fehlmann, joined the team in May 2025, working as a technical sales representative. His brother, Dominik Fehlmann, has been with the company since 2022. This is a strong sign for the future of FEHLMANN as a family business.

Jonas Fehlmann is now working as a technical sales representative.



Investing in the future –
5-axis expertise for the next generation

With the new FEHLMANN PICOMAX 550 in our company's own training workshop, we are making a targeted investment in the training of future skilled workers. The machine is ideal for getting started with 5-axis simultaneous machining and enables the precise production of complex workpieces up to 300 × 300 × 300 mm. It is used both in CNC training in the third and fourth years of apprenticeship and for smaller series parts.

In addition to practical programming on the machine, apprentices have access to a newly equipped CAM workstation. This provides a practical introduction to modern multi-sided machining - ideal preparation for the demands of this industry in the future.



Apprentices at FEHLMANN's training center are trained on state-of-the-art machines.

FEHLMANN DIGITAL – INFORMED, CONNECTED, INSPIRED



Instagram

In addition to our website, we offer up-to-date information on trade fairs, events, customer reports, innovations, and company news on LinkedIn, YouTube, and **new on Instagram**.

Gain exclusive insights into the world of precision machining and discover how innovation, technology, and passion come together at FEHLMANN.



Follow us – and stay connected to precision

[instagram.com/fehlmann_ag](https://www.instagram.com/fehlmann_ag)
[linkedin.com/company/fehlmann](https://www.linkedin.com/company/fehlmann)
[youtube.com/@FehlmannAG](https://www.youtube.com/@FehlmannAG)

Jobs at FEHLMANN

We offer exciting positions, secure prospects, and the opportunity to actively shape the future of manufacturing. Discover our vacancies and apprenticeships:

Scan me





Machining centers in portal design



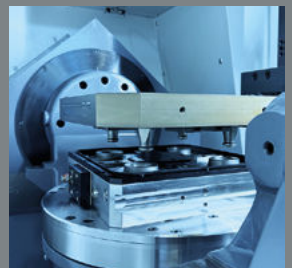
Machining centers



Milling/drilling machines



Service/Accessories



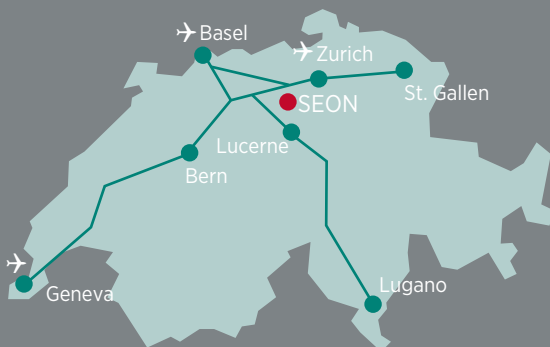
Automation

© by Fehlmann 2512


Fehlmann AG, leading-edge technology
"Made in Switzerland"

From development, design, manufacturing and
assembly to training and service.

With FEHLMANN you are one step ahead of your
competition.



Fehlmann AG Maschinenfabrik
Birren 1 - 5703 Seon - Switzerland
Phone +41 62 7691111
mail@fehlmann.com - fehlmann.com

Your Precision Advantage.* 

FEHLMANN